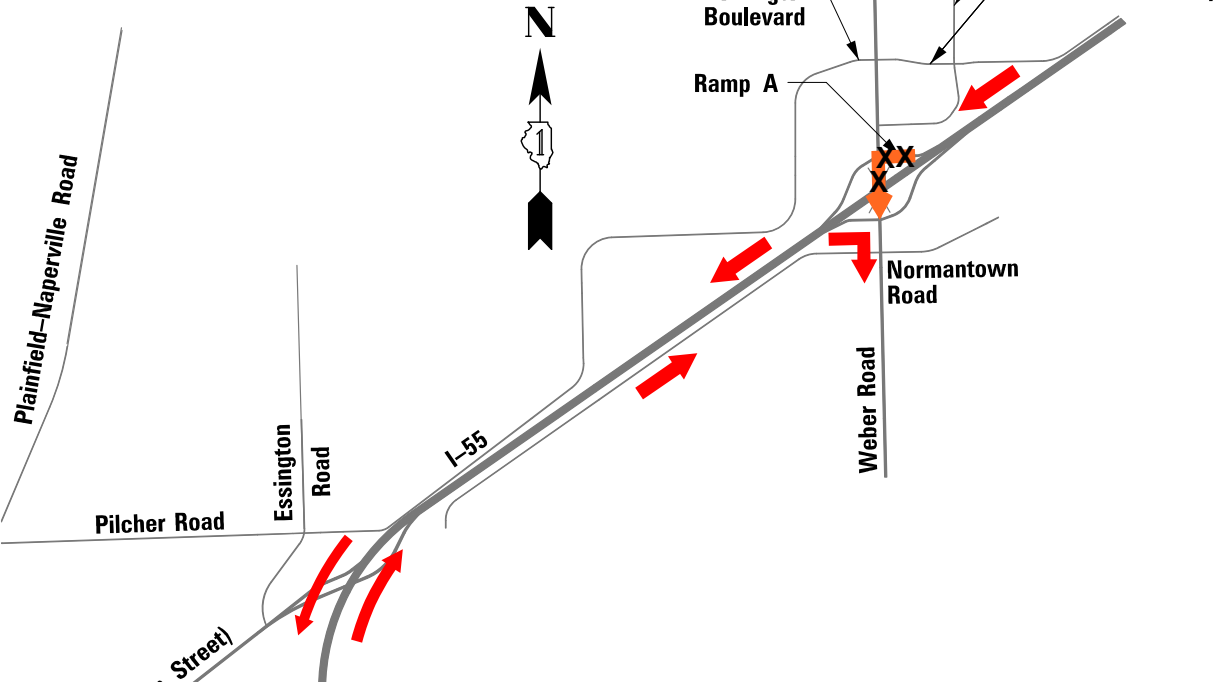
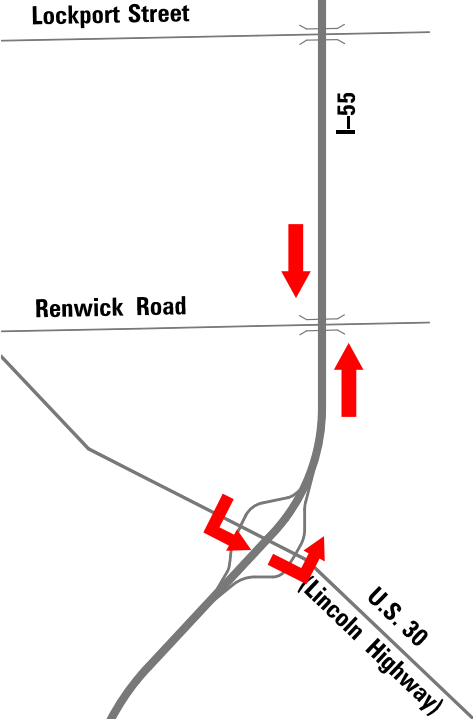
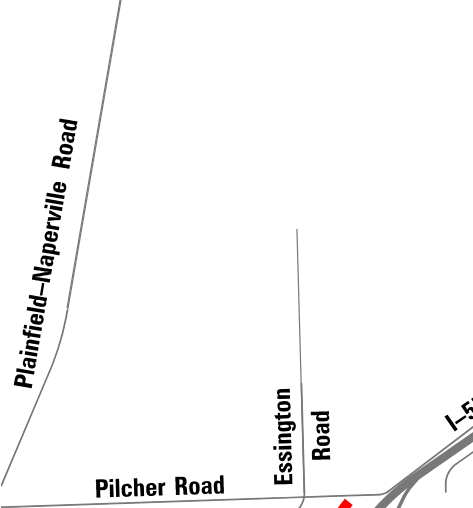
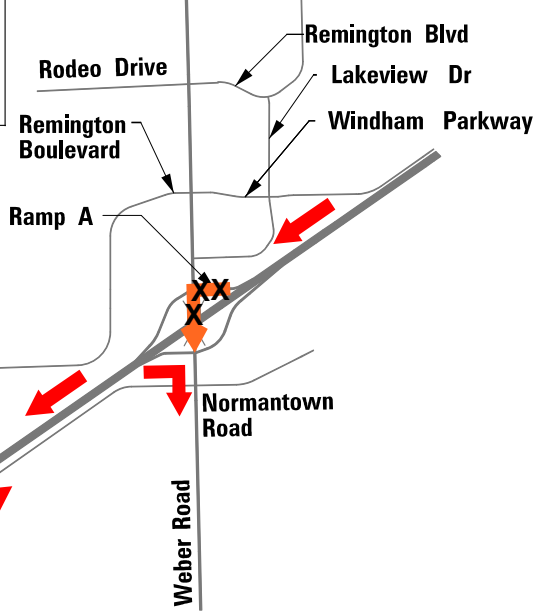
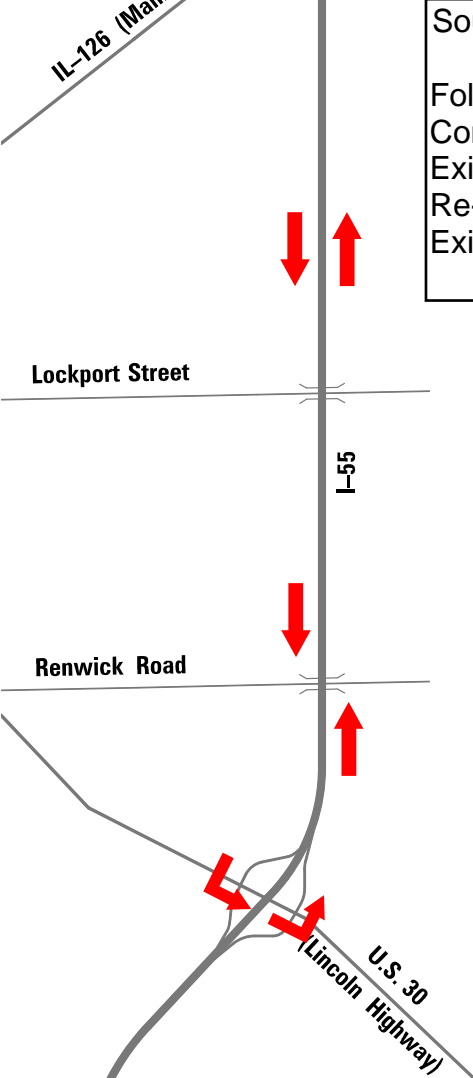
 **SOUTHBOUND I-55 TO SOUTHBOUND WEBER ROAD DETOUR ROUTE (PARTIAL RAMP A CLOSURE)**



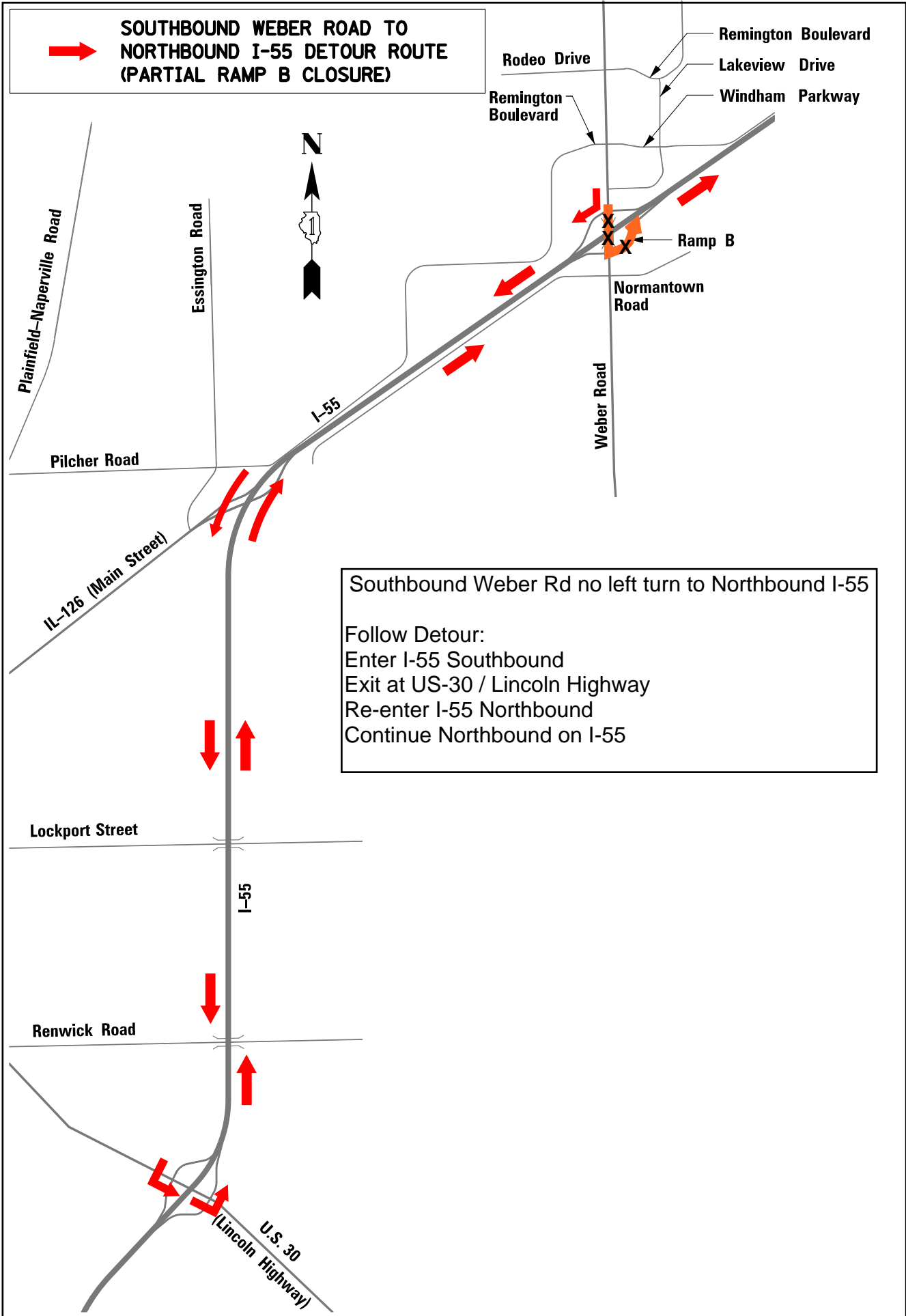
Southbound I-55 no left turn to Southbound Weber Rd

Follow Detour:
Continue South on I-55
Exit at US-30 / Lincoln Highway
Re-enter I-55 Northbound
Exit Weber Rd, turn South





**SOUTHBOUND WEBER ROAD TO
NORTHBOUND I-55 DETOUR ROUTE
(PARTIAL RAMP B CLOSURE)**



Remington Boulevard
Lakeview Drive
Windham Parkway

Ramp B

Normantown Road

Weber Road

Southbound Weber Rd no left turn to Northbound I-55

Follow Detour:
Enter I-55 Southbound
Exit at US-30 / Lincoln Highway
Re-enter I-55 Northbound
Continue Northbound on I-55

Plainfield-Naperville Road

Essington Road

Pilcher Road

IL-126 (Main Street)

Lockport Street

Renwick Road

I-55

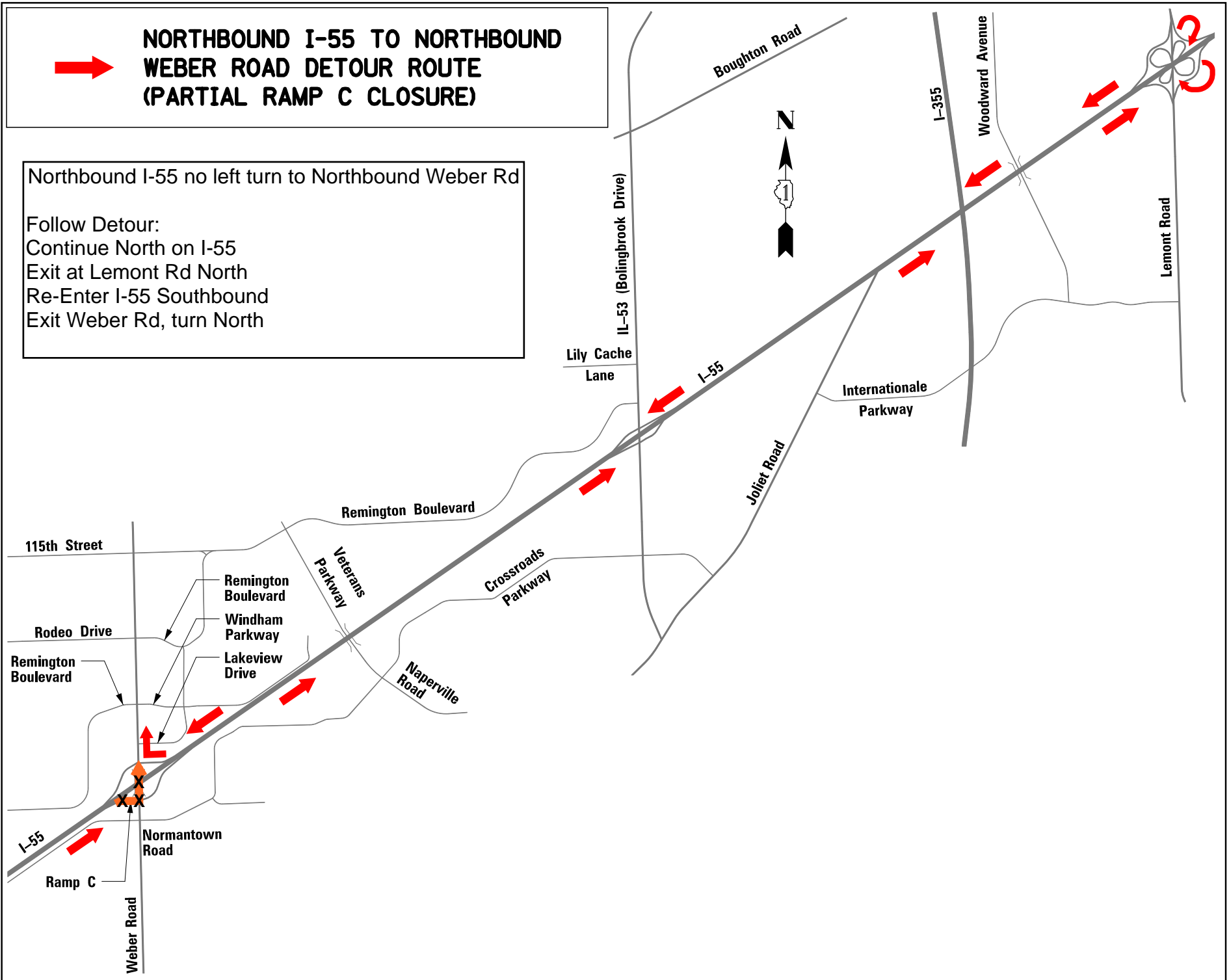
U.S. 30
(Lincoln Highway)



**NORTHBOUND I-55 TO NORTHBOUND
WEBER ROAD DETOUR ROUTE
(PARTIAL RAMP C CLOSURE)**

Northbound I-55 no left turn to Northbound Weber Rd

Follow Detour:
Continue North on I-55
Exit at Lemont Rd North
Re-Enter I-55 Southbound
Exit Weber Rd, turn North





NORTHBOUND WEBER ROAD TO SOUTHBOUND I-55 DETOUR ROUTE (PARTIAL RAMP D CLOSURE)

Northbound Weber Rd no left turn to Southbound I-55

Follow Detour:
Enter I-55 Northbound
Exit at Lemont Rd North
Re-Enter I-55 Southbound
Continue Southbound on I-55

